



# Deploying Industrial Training Equipment for Better Hands-On Training

A Product Showcase



# Today's Presenter



**Stephen Harnden**

Maintenance Training  
Instructor and Technical  
Writer



# Agenda

- 01 Equipment for Hands-On Training
- 02 Training Best Practices
- 03 How GP Strategies Can Help

01

# Equipment for Hands-On Training





For the things we have to learn before we can do them, **we learn by doing them.**

— Aristotle

# Electrical Troubleshooting Trainer



Electrical Troubleshooting

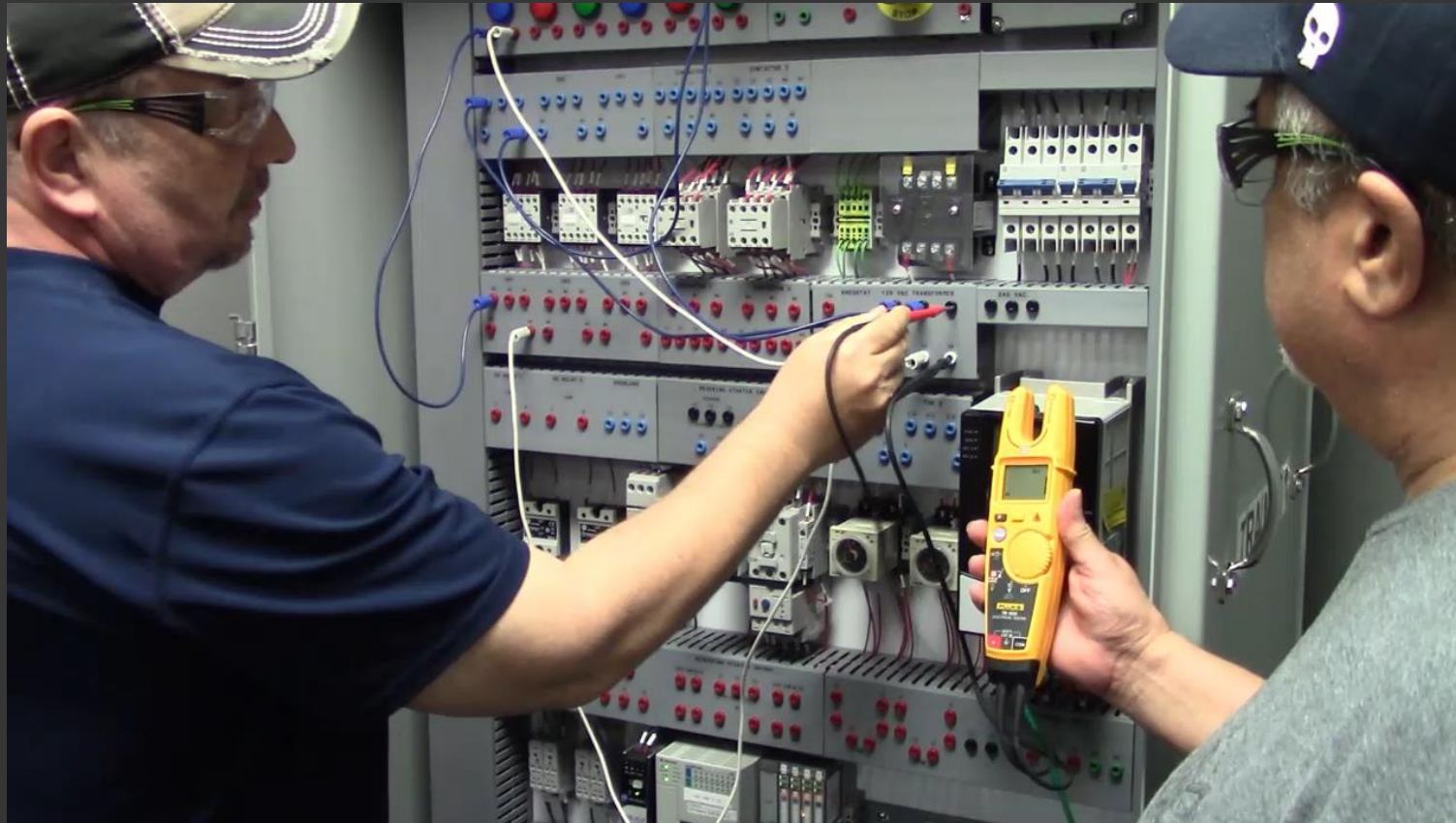
Relay-based motor control

VFDs

PLCs

Runs on 120V single-phase power

# Electrical Troubleshooting Trainer



# Valve Trainer



Disassemble

Reassemble

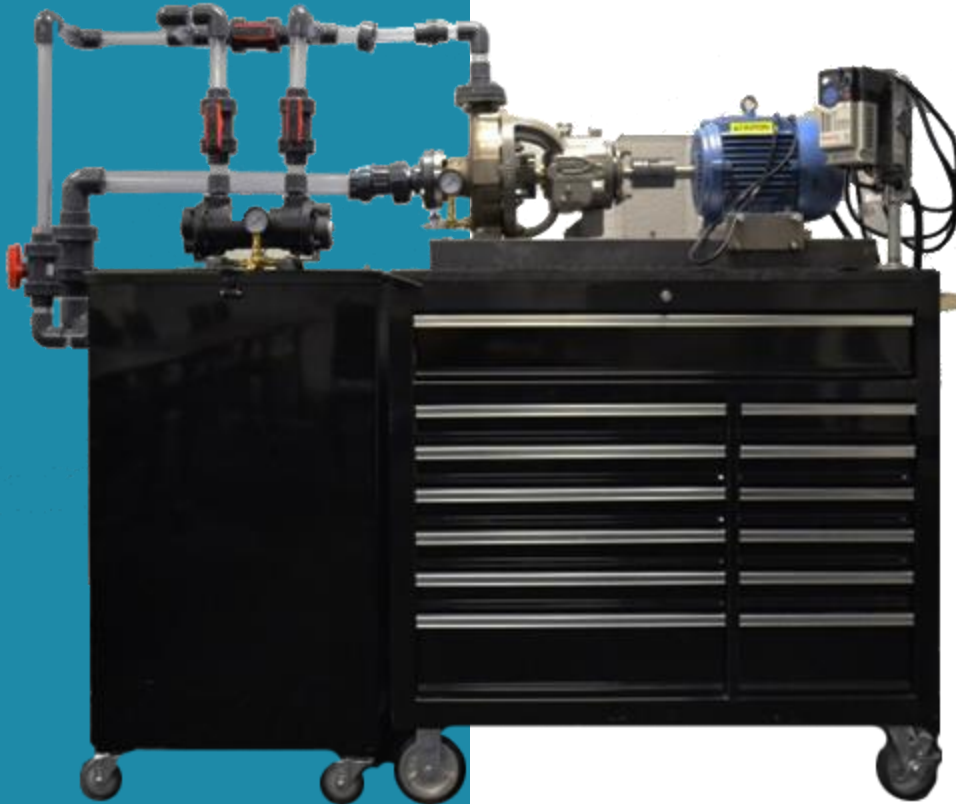
Inspect

Troubleshoot

Runs on 120V single-phase power



# Pump and Mechanical Trainer



Precision alignment

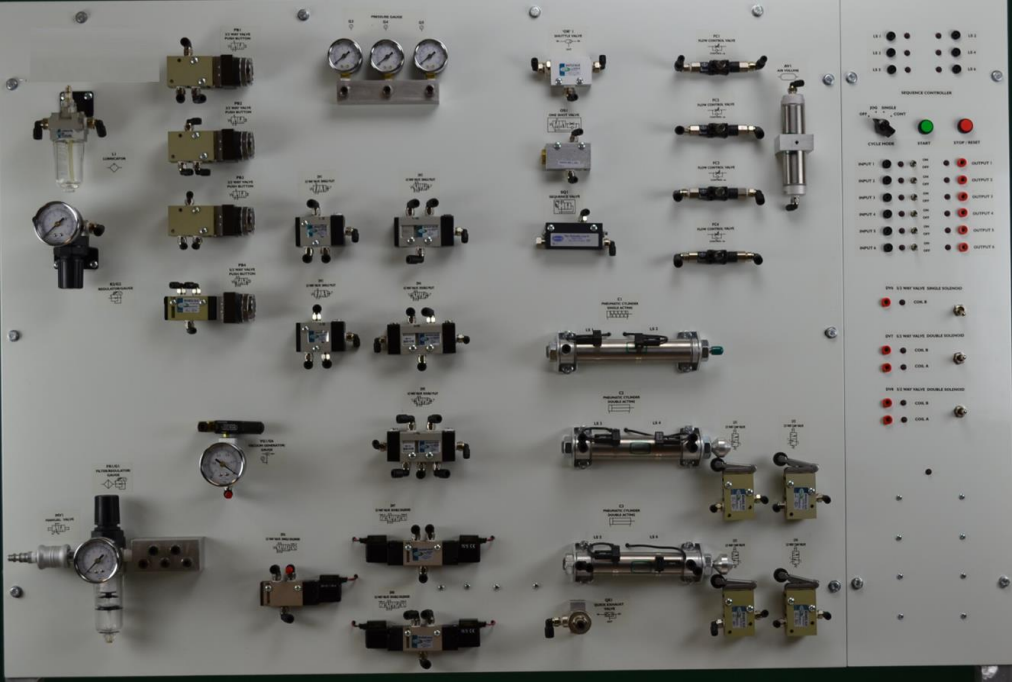
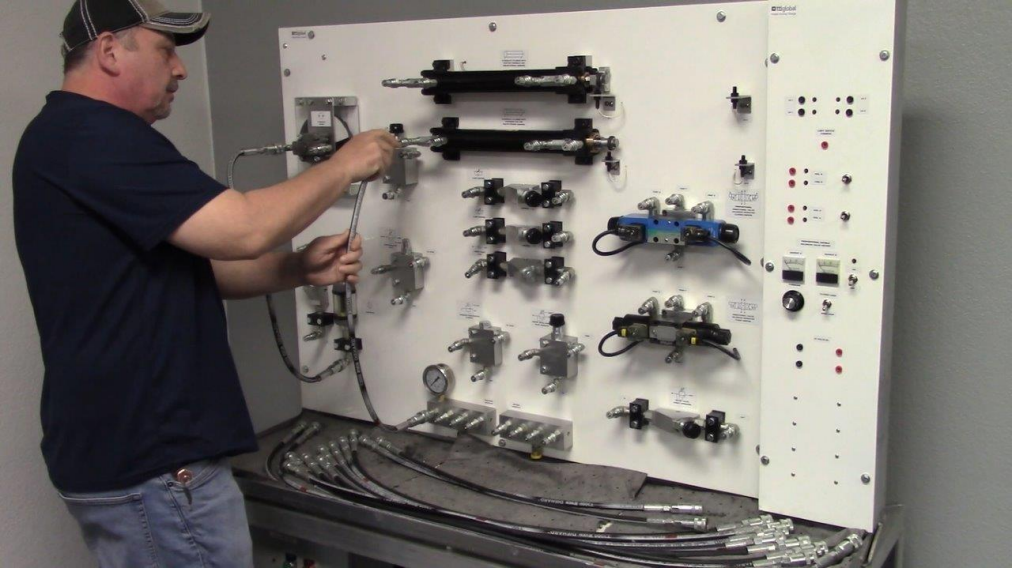
Pump rebuild and repair

Mechanical seals

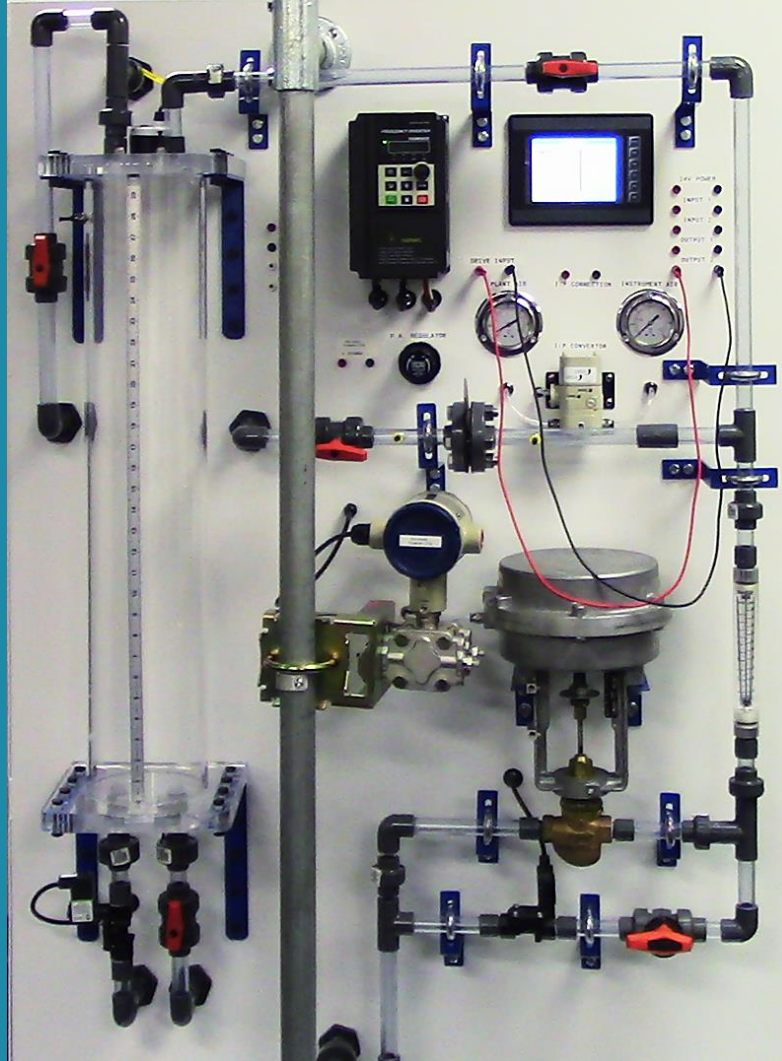
# Pump and Mechanical Trainer



# Hydraulics Trainer and Pneumatics Trainer



# Process Controls Trainer



Types of instrumentation

Calibration

Process control

Tuning

Water system

HART-compatible SMART transmitters

# Process Controls Trainer



02

# Training Best Practices



# Training Best Practices

No single training path works for the whole workforce. There are multiple types of learners, each with their own needs.



# Training Best Practices

Reduce time to proficiency:



**DEFINE**  
your program



**ASSESS and  
ANALYZE**



**ADDRESS** all  
skills gaps

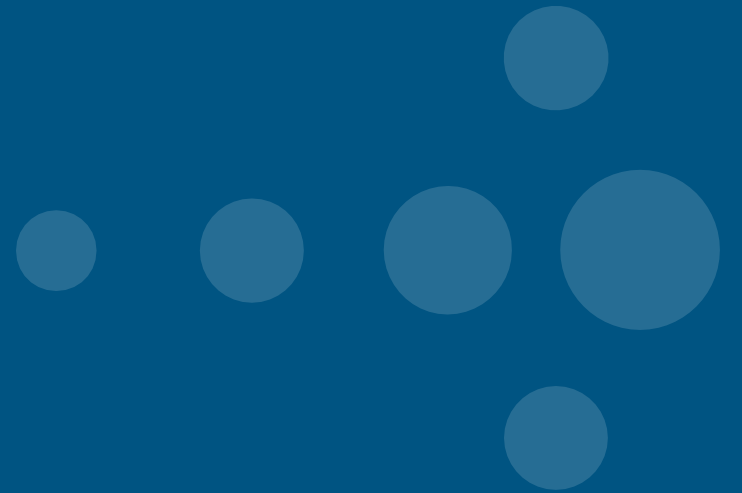


**TRAIN** for the  
fundamentals early



03

# How GP Strategies Can Help



# Our Technical Skill Competencies



General Craft



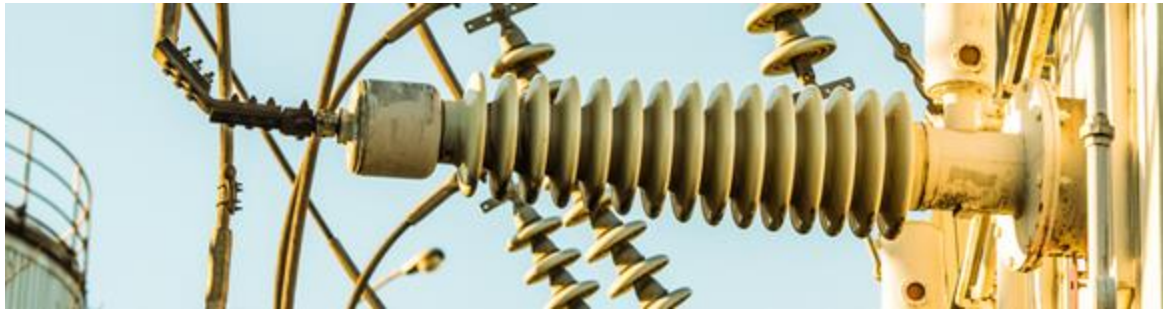
Mechanical



Electrical



I&C



Power Plant Operations



Maintenance Planning

# Competency Assessment Process



# Hands-On Training Options

# 1

## **Offsite Technical Training Center**

A facility with large classrooms and labs, outfitted with proper equipment and instructors. Ours is in Tampa, Florida.

# 2

## **Onsite Technical Training**

Upskill your workers at your facility. We travel with the training equipment and deliver training with real-world hardware. Our instructors conduct the courses and provide the learning materials.

# 3

## **Custom Build**

Develop your own training stations to add to your facilities. We build to your site's specifications and ship to anywhere. Train-the-trainer sessions prepare your instructors to deliver sessions in-house as needed.

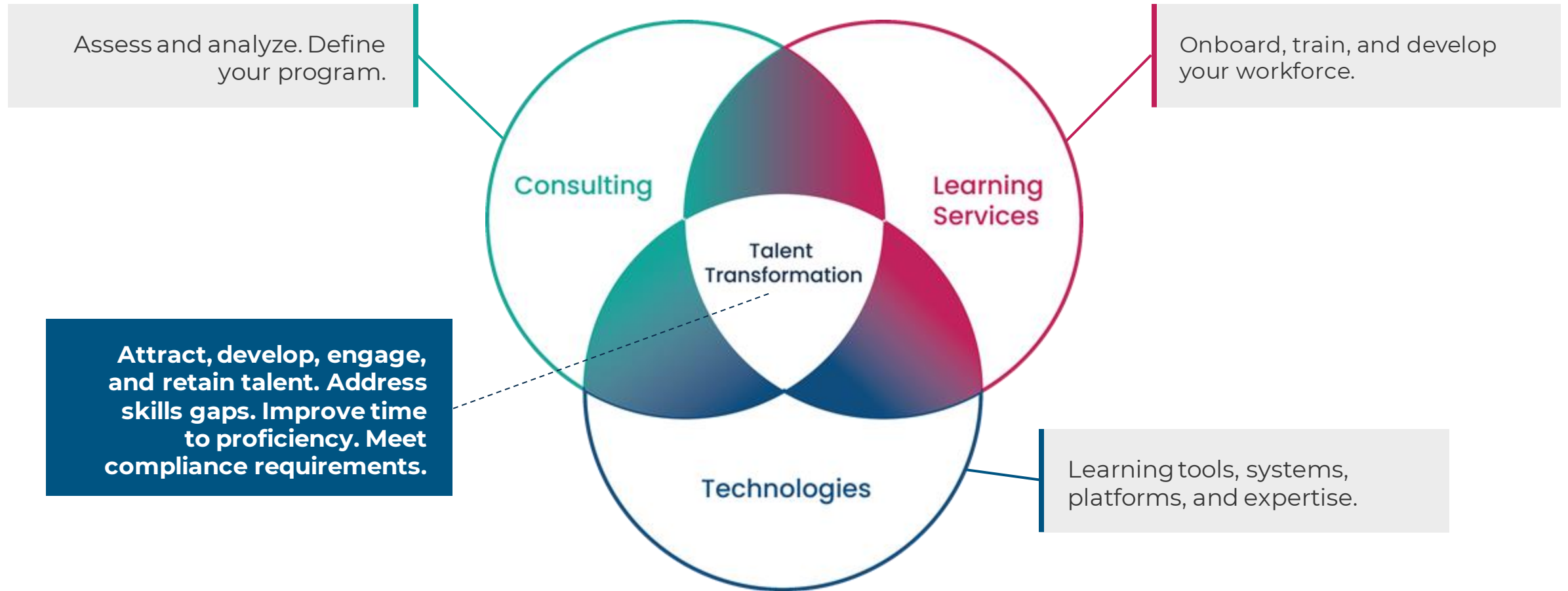
# GP Strategies Courseware

All GP courses include guides and materials for instructors and learners, as well as hands-on lab manuals.

- 1 Select our standard training, which can also be licensed** through a perpetual intellectual property agreement.
- 2 Enhance your existing training, or work with us to** develop a **customized solution.**



# Our Unique Value





# Thank you!

Contact: [info@gpstrategies.com](mailto:info@gpstrategies.com)